

TECHNICAL SPECIFICATIONS

Platform	
Type of device	Primelase HR EXCELLENCE LASER hair removal device
Technical specifications	
Maximum peak electrical power	10000W
Maximum energy	300 J
Static operation mode	Static: 1/2/3Hz
Dynamic operation mode	Dynamic: 5-10Hz
Pulse length	3-400 ms
Programmed parameters	Yes
Power	Single-phase network 100-240V
Mains frequency	50-60Hz
Nominal power	2800W
Maximum power	3300W
Maximum current	13A
Technical specification	
Maximum peak power	4.800W
Wavelengths	755nm, 810nm, 940nm and 1060nm
Spot size	20x9, 30x9 and 30x17
Fluence	Dependent upon treatment protocols
Regulation	
MDD Directive	Class IIb
IEC Classification 60825-1	Class IV LASER
IEC Classification 60601-1	Class I, type B
Marking	CE + FDA
Physical characteristics	
Dimensions	1140x480x550 mm
Screen	4-inch 10-point touch screen
Weight	75 kg
Working range	18-30°C
Environmental conditions	2-50°C <90% Humidity (without condensation)



الشركة الطبية العالمية
Global Medical Co.

+ 974 4442 1661

+ 974 4442 9588

gmedco@gmedco.com

www.gmedco.com

Building 69 , Al Juwan Street, Al Sadd,
Doha, Qatar / P.O.BOX : 11093

primelase
EXCELLENCE

DISCOVER THE POWER OF LIGHT



by cocoon medical

BIG SPOT SIZE



MULTI-TREATMENT
LASER PLATFORM

الشركة الطبية العالمية
Global Medical Co.

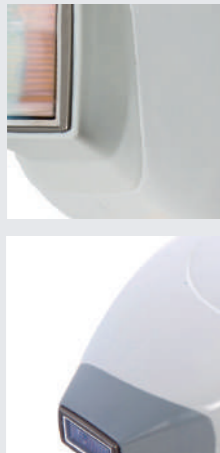
THE PRIMELASE REVOLUTION CONTINUES

Primelase is the first and only laser platform that guarantees a 4.800W maximum power, providing the best performance and highest profitability on the market.

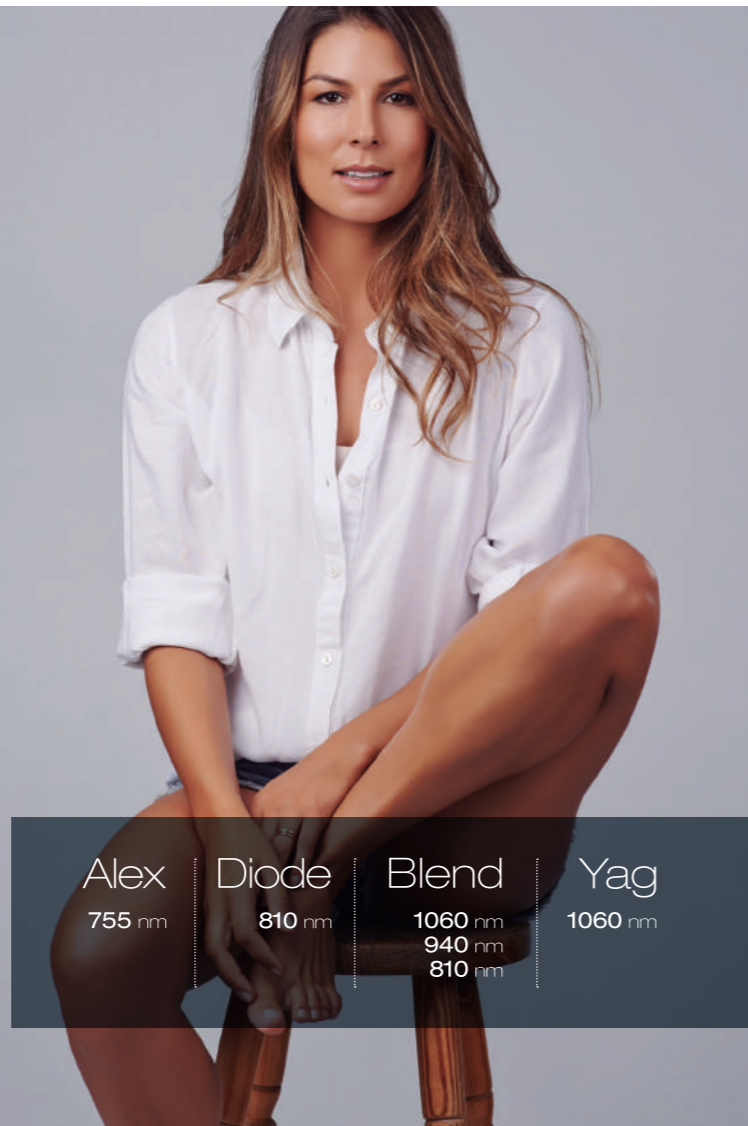
05 Treatments	04 Wavelengths	4.800W Power	04 Spot sizes
------------------	-------------------	-----------------	------------------

MULTIPLE WAVELENGTHS

The platform combines four different wavelengths Alex (755nm), Diode (810nm), Blend (810nm + 940nm +1060nm) and Yag (1060nm) ensuring the maximum versatility on all skin conditions.



- Effective USP technology (Ultra Short Pulse) with all the spot sizes.
- 1 platform = 5 different treatments.
- 4 different spot sizes (10x10, 20x9, 30x9 and 30x17).
- High Peak Power (4.800W).
- High frequency regardless of the fluence.
- 2 modes: Static & Dynamic



MULTI-TREATMENT PLATFORM

Primelase excellence combined 5 different skin treatment in one platform:

Hair Removal	Vascular Lesions	Pigmented Lesions	Rejuvenation	Acne
--------------	------------------	-------------------	--------------	------



- More versatile than ever.
- Clinically proven protocols that guarantee the best results.
- State-of-the-art laser technology.
- Designed to work non-stop.

TECHNOLOGY

TECHNOLOGY	POWER	TREATMENT					
		SPOT	HR	RE	VA	PL	AC
Alex 755 nm	3.700W	20x9 30x9 30x17	●			●	●
Diode 810 nm	4.800W	20x9 30x9 30x17	●			●	●
Blend 1060nm 940nm 810nm	4.000W	20x9 30x9	●	●			●
Yag 1060 nm	4.000W	10x10	●	●	●		●

